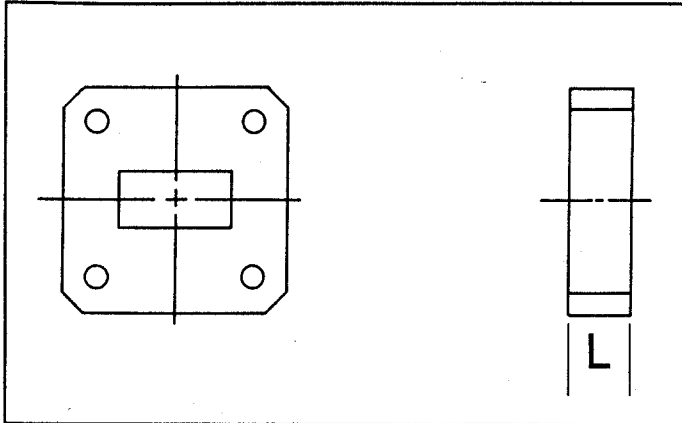


PRESSURE WINDOWS



A series of instruments used to form a pressure barrier in a waveguide system. Standard units have the same cross section as the flanges and chokes listed in the following charts.

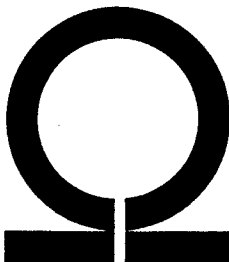
Standard units are fabricated from aluminum material. Materials used for the window are chosen for best insertion loss and VSWR loss is generally .10 to .15 db depending upon style. Standard units are designed for a minimum of 15 PSIG operating range. Units for higher pressures are available.

Standard units have flat faces on both sides and are designed to be used with a choke flange and O-ring gasket on the mating high pressure side. Windows with a self contained O-ring groove are available if it is not feasible to use a mating choke. Standard units have all clearance holes, but units with thread inserts are available on special request.

RECTANGULAR WAVEGUIDE PRESSURE WINDOWS				
Model	Waveguide Size	Frequency Range (GHZ)	Flange	Insertion Length
822	WR-284	2.60-3.95	UG-53/U	.375
823	WR-229	3.30-4.90	CPR-229F	.375
824	WR-187	3.95-5.85	UG-149A/U	.375
825	WR-159	4.90-7.05	CPR-159F	.375
826	WR-137	5.85-8.20	UG-344/U	.375
827	WR-112	7.05-10.0	UG-51/U	.375
3828	WR-102	7.00-11.0	UG-1493/U	.375
828	WR-90	8.20-12.4	UG-39/U	.375
3825	WR-75	10.0-15.0	M70/016 ¹	.375
829	WR-62	12.4-18.0	UG-419/U	.375
3826	WR-51	15.0-22.0	M70/002 ¹	.375
3820	WR-42	18.0-26.5	UG-595/U	.375
3821	WR-28	26.5-40.0	UG-599/U	.375

¹ Refer to MIL-F-3922

DOUBLE RIDGED WAVEGUIDE PRESSURE WINDOWS			
Model	Waveguide Size	Frequency Range (GHZ)	Insertion Length
9822	WRD-350D24	3.50-8.00	.375
9823	WRD-475D24	4.75-11.0	.375
9824	WRD-650D28	6.50-18.0	.375
9825	WRD-750D24	7.50-18.0	.375
9820	WRD-110C24	11.0-26.5	.375
9821	WRD-180C24	18.0-40.0	.375



OMEGA LABORATORIES INC.